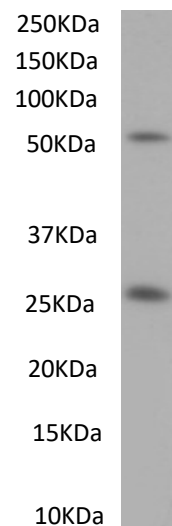


Product Datasheet

Goat anti-mouse IgG antibody

#SB-52-3001

Immunogen	Purified mouse whole IgG
Quantity	0.2mg in 0.5mg/ml
Purification	Ammonium sulphate precipitation of serum followed by antigen affinity purification
Conjugate	Unconjugated
Buffer	Phosphate buffer saline, PH 7.2, with 0.02% sodium azide as preservative
Storage and handling	Store at 4°C for short durations. Store at -20°C for longer periods (> 1 month). Minimize freeze thaw cycles
Applications tested	<p>Protein ELISA: antibody detection at 1:16000 dilution</p> <p>Western blotting: Approx 50kDa and 25 kDa (reduced) band observed in mouse IgG. Recommended dilution: 1:3000 to 1:10000</p>
Application notes	Please optimize dilutions for your particular assay conditions. Starting test dilution: 0.5µg/ml for ELISA and WB



SB-52-3001 Anti-mouse IgG (1:3000) staining of mouse IgG reduced (0.5 µg protein per lane). Primary incubation was 1 hour. Detected by chemiluminescence